

1913 YEAR BOOK

SPEND YOUR VACATION AT

“Chautauqua”

Chautauqua, Illinois

PURE AIR PURE SPRING WATER COOL NIGHTS
FINE SWIMMING POOL MAGNIFICENT SCENERY
BATHING BOATING FISHING
AMPLE HOTEL ACCOMMODATION

EXPENSES NOMINAL

Nine Weeks of High
Class Entertainment

A COOL SUMMER RESORT TWO HOURS
RIDE FROM ST. LOUIS

RATES OF ADMISSION

From June 1st to Sept. 6th every person on the Piasa Chautauqua Grounds is required to have a ticket.

All tickets admit to Auditorium unless otherwise stated.

BOAT TICKETS

(Good only during stay of boat.)

Adults 10c.

Children 5c.

ONE DAY TICKET

(June 1st to June 27th)

Adults 10c.

Children 5c.

ONE DAY TICKET

(June 28th to September 6th)

Adults 25c.

Children 15c.

WEEK END

(Friday Evening until 6 o'clock Monday evening.)

Adults 50c.

Children 25c.

ONE WEEK

(During Assembly period, June 28th to August 31st.)

Adults \$1.25.

Children 65c.

Weekly—before and after Assembly period, Adults 50c.

Children 25c.

ASSEMBLY PERIOD

(June 28th to August 31st.)

Adults \$4.00.

Children \$2.00.

Assembly tickets good also for entire season.

CLERGYMEN

One week 65c.

Assembly period and Season \$2.00.

BIBLE CONFERENCE WEEK

(July 27th to August 2nd.)

Adults \$1.00.

Children 50c.

EMPLOYEES

Season Ticket (Not good at Auditorium) \$1.00.

Season Ticket (Including Auditorium) \$2.00.

Persons over 15 years classed as adults.
Children under 8 years, if accompanied by older person on paid ticket, Free.
Tickets, presented by any except rightful owner, will be taken up.

“New Piasa Chautauqua”

Piasa Chautauqua is the only successful, high-class Summer Resort near St. Louis. For thirty years, without intermission, Piasa has held an annual assembly, which has been enjoyed by thousands, and it is with pride the directors refer the discriminating public to Chautauqua's past successes.

Piasa Chautauqua covers an area of 310 acres, with 120 substantial residences, many quite elaborate and more being erected each season. Located 38 miles from St. Louis, nestling in a beautiful valley between magnificent, towering bluffs, with the mighty Mississippi at its front and an almost unexplored forest at its back—one of Nature's most picturesque spots, dear to all who have enjoyed its beauties.



THE BUSY BUSINESS MAN LEAVING ON THE MORNING SPECIAL FOR THE CITY.

The nights at Chautauqua are delightfully cool; many persons who cannot stand the sweltering heat and sleepless nights in the city, turn to Chautauqua for rest, recreation and up-building.

The charm of Chautauqua is its beautiful scenery; here one finds at every turn, beauty to satisfy the eye, heart and mind; Restful, Peaceful—away from the city's busy throngs—a veritable “Peaceful Valley,” where business and other worries do not enter.

Chautauqua's principal attractions are, pure air, pure spring water, cool nights, beautiful scenery, ample hotel and boarding house accommodations, and a program, unsurpassed, and the equal of any Chautauqua.

The grounds are well policed and no objectionable characters, or intoxi-

cants are permitted. Children live and play outdoors all day long and become healthy and strong and may safely be left unattended as no possible harm can come to them.

Season after season, many wise fathers send their families to Chautauqua for an outing. While many who cannot stay an extended period spend the "week ends" with their families.

One cannot help but be benefitted, mentally, morally and physically by a stay at Chautauqua, and will return much refreshed and strengthened for the daily round of home and business duties.

To enjoy complete rest, you should spend a season at Chautauqua. However short the time, you will find it well worth your while.

Chautauqua is the garden spot of the Mississippi Valley.

WHAT PIASA CHAUTAUQUA STANDS FOR

Piasa Chautauqua in the Summer Assembly season stands primarily for the simplicity and naturalness of Christian living. It is built on the faith that unaffected, straightforward religion makes a life neither sanctimonious nor fanatical, but simple, normal, vital, free and glad.

Piasa Chautauqua in its independent environment presents a concrete picture of social Christianity, applied not in any Utopian scheme, but in the everyday relations of neighbors dwelling wholesomely together on principles of Christian good will.

In an atmosphere as unconstrained as the atmosphere of a good home, Piasa Chautauqua rejoices in all the spontaneous joys of family and neighborhood life, enlarging the family sympathies to include the neighborhood and intensifying the neighborhood sense with much of common interest. Not as an addition to, but as an expression of the simple life it wishes to cultivate.

Piasa Chautauqua gives large place for recreation, amusements—down-right fun. From the initial of religion Piasa Chautauqua reaches out for everything that is hearty, hale, whole and unpretentious, and finds itself still within the pale of religion interpreted by its own large ideals.

Whoever loves this comprehensive wholeness of life and despises the tacked-on conventionalities of artificial social standards—whoever prefers freedom and frankness—will be welcome at Piasa Chautauqua, and having come, will be glad for Piasa Chautauqua.

LIVING EXPENSES

Expenses at Chautauqua are made as small as possible, thus placing an outing on the grounds within the reach of all. Besides the hotel there are many private boarding houses and cottages where guests can obtain rooms and board, or rooms and accommodations for light housekeeping.

The store will be open throughout the season, and all kinds of groceries, fresh fruits and vegetables, meats, bread and cakes can be had at prices as

low as those of a city. The gardeners have an abundant supply of fresh vegetables throughout the entire season. Fresh butter, milk and eggs are supplied by the farmers of the neighborhood at very reasonable prices. Two refreshment pavillions are open—one at the main entrance, and the other near the auditorium—where lunches, ice cream, fruit and confectionery are sold. A number of furnished cottages can be rented for all or a part of the season at from \$50 to \$150 for the entire season, and fine lots and platforms for tenting can also be rented. In every way Chautauqua is an ideal place and accommodations are obtainable at prices to suit all purses. Telephone and telegraph communication can be had with all parts of the country. Mails are received and sent out three times a day, except Sunday. Have your mail addressed to Chautauqua, Ill.



PIASA SPRING

THE FAMOUS PIASA SPRING

The Hotel, Cottages and Swimming Pool are all supplied with the great health-giving Piasa Spring Water, an analysis of which shows it to be almost identical with the famous Eureka Springs water.

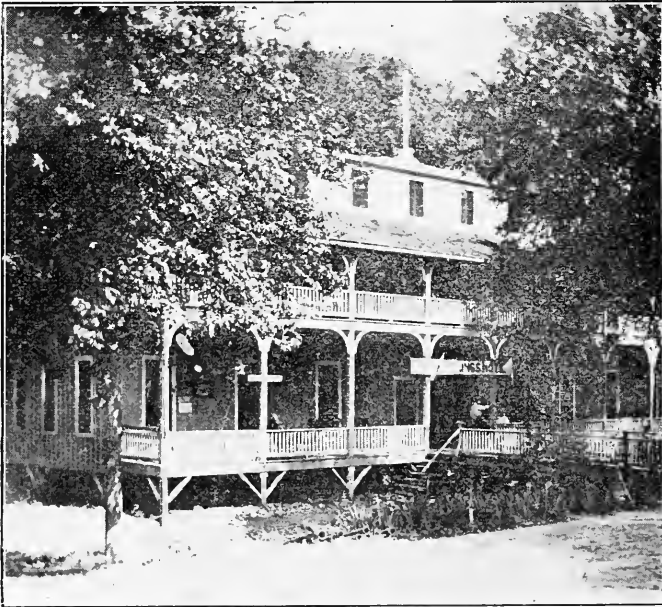
The water is clear, cool, soft, pleasant and palatable. Purity is its greatest quality. There is not the slightest taint of mineral or other foreign substance in its taste. Pure water is nature's greatest solvent; it is the principle factor in healthy digestion, assimilation and excretion. Unadulterated with minerals or drugs of any kind, it is the greatest tonic of all waters. Pure natural spring water will kill germs which will live in distilled water.

THE GROUNDS OF PIASA CHAUTAUQUA

Leading from the Railroad Station at Chautauqua are two beautiful rustic bridges; the one to the left takes you to the "Inn," the other to the Assembly grounds of the Piasa Chautauqua.

The Assembly grounds include over three hundred acres, all well shaded and with trim gravel driveways and walks leading to the hundreds of beautiful cottages, which are the summer homes of people from points far and near. The grounds are well lighted and supplied with running water from the great Piasa Spring. There are grocery and other stores on the grounds, also lunch counters, barber shop, cigar stands, hotels, boarding houses, etc.

The program is made up of a most enjoyable series of entertainments, some new and attractive feature being provided each day. The Assembly is conducted on the same lines as the parent Chautauqua. The program includes lectures by the most prominent lecturers of the day; sermons by eminent divines, concerts, magic, moving pictures, etc. A large auditorium is located in the center of the grounds, where the entertainments are given. Near this Auditorium is the wonderful Piasa Spring.



PIASA SPRINGS HOTEL.

Piasa Springs Hotel, located near the center of the grounds, close to the famous Piasa Spring, has been thoroughly overhauled, renovated, refurnished and put in first-class condition throughout. For rates, see under heading "Hotels and Boarding Houses," on page 40.



THE INN, FROM THE STATION.

"The Inn," a hotel containing 90 rooms, beautifully located, fronting the river, near the entrance and just outside the grounds, will be in charge of a competent manager with a first-class chef. An ideal place to spend the summer vacation. Open June 1st.

Bookings can be made by addressing THE INN, Chautauqua, Ill., after June 1st; before that time address THE DUDLEY HOTEL, 4145 Lindell Boul., St. Louis, Missouri.

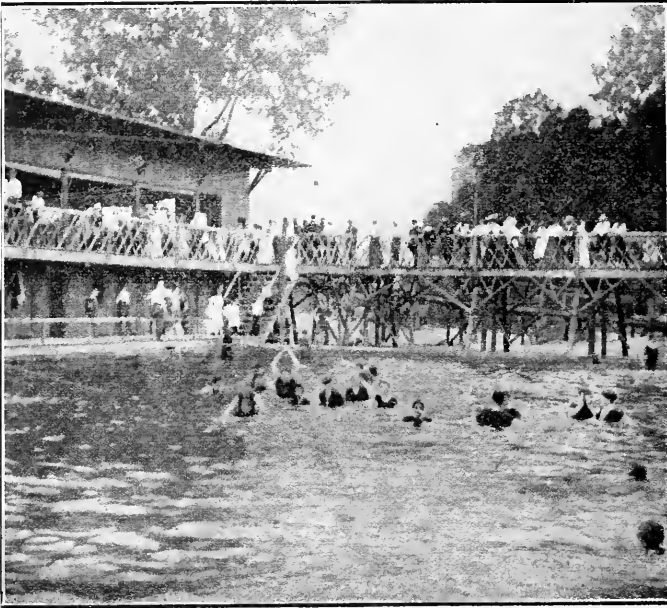


NEW BRIDGE LEADING FROM
STATION TO ASSEMBLY GROUNDS.

AMUSEMENTS AND RECREATIONS

BOATING

Several launches are at the service of Chautauqua visitors, together with an ample equipment of row boats. There will be regular launch trips daily, to Elsay and Grafton, also to any special neighborhood points that may be requested. Fishing tackle and bait at current prices.



THE SWIMMING POOL.

SWIMMING POOL

Size 75 feet wide by 175 feet long. Enjoyed by men, women and children, daily, except Sunday. The depth is graduated from two feet to eight feet. There are springing boards, swing, and slide. Watching the bathers is one of the favorite pastimes of those who do not desire to take a plunge in the pool.

What more attractive feature could be suggested than the great Chautauqua bathing pool?

Depth at different points is plainly indicated by large figures, and the increase is so gradual that there is no danger for those who cannot swim, while the swimmer has room to enjoy as long a dash as is usually desired. An expert is in constant attendance to assist those who may wish to learn to swim.

There are spring boards, tubs, ropes, etc., affording a variety of water amusements.

Private dressing rooms and bathing suits can be had at reasonable prices.

A refreshment stand is operated in connection with the pool where ices, light refreshments and cooling drinks can be had. No intoxicants are sold.

LAWN TENNIS

The Lawn Tennis Courts are free to Cottagers and Visitors. Bring your racquets with you.

CROQUET

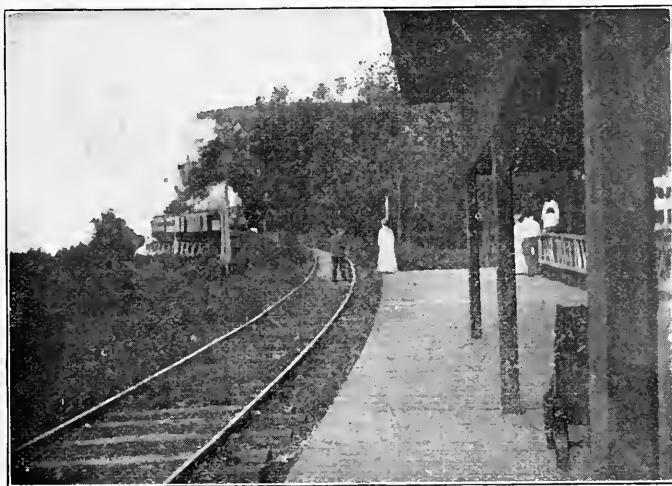
There are two public croquet grounds, in first-class condition, with the necessary equipment. The use of these grounds is free to Cottagers and Visitors. Croquet sets furnished free.

BASEBALL

The baseball grounds are in first-class condition. A competent director will make all engagements and assist in organizing teams and arranging games. A game is scheduled for every Saturday afternoon.

CHAUTAUQUA SCENERY

Take your camera and climb the bluffs. For miles about you on either side, you behold most magnificent scenery. Below, flows the mighty Mississippi, and the Illinois River in the distance. But little more than a mile away is the quaint, century-old village Elsay, to be reached by easy walk over the Bluffs or along the river's bank; off in the opposite direction



THE ARRIVAL—TRAIN ROUNDING THE BLUFF.

(distant about two miles), lies the town of Grafton, noted for fishing and boat building. There are many delightful walks through the woods to the rear of Chautauqua, also in either direction over the Bluffs.

Piasa Chautauqua is less than two hours' ride from St. Louis, with frequent trains and boats at low rates. It is accessible from all points and

within the means of all who take a summer vacation. The business man can live at Chautauqua and be at his business during the day without loss of time or increase in living expenses. Furnished cottages can be rented at reasonable prices for the season or by the week or month. The hotel accommodations are first-class and at very reasonable rates.

Excursions rates are offered during the entire assembly period, by both railroads and steamboats. The man who can only take a day or two from business or possibly be away over Sunday only, does not wish to devote much time and money to getting to and from his resting place, and he with the longer vacation may not care to spend all his entertainment fund in transportation. He can avoid this by coming to Piasa Chautauqua.



ENTRANCE TO BEAUTIFUL CHAUTAUQUA GROUNDS.

THE CHILDREN AT CHAUTAUQUA.

The children always enjoy Chautauqua. Not only is it a place of pleasure for them, but it is one where they can profit both mentally and physically. The clubs and various sports will keep them interested, and the panorama of the river, with its passing boats, is always an attraction; the great swimming pool is of such depths that they can enter it without the least danger; swings, games, etc., will keep them busy, and the play ground always interests them.



THE CHILDREN AT CHAUTAUQUA.

IF YOU WISH YOUR CHILDREN TO DEVELOP MENTALLY
AND PHYSICALLY CHAUTAUQUA IS THE VERY
PLACE FOR THEM.



VESPER SERVICE ON THE LAWN IN FRONT OF THE
AUDITORIUM.

HELD EVERY SUNDAY AFTERNOON 4:30 TO 5:15 P. M.
GOOD SINGING—GOOD SPEAKING.

OFFICIAL PROGRAM—ASSEMBLY PERIOD

SATURDAY, JUNE 28th

8:00 P. M. Piano Selection, Miss Cornelia Brownlee, Official Pianist.

—Address—

"PAST, PRESENT AND FUTURE OF CHAUTAUQUA,"

C. Bernet, President.

Humorous Recitation, Mrs. Pierre Grigg.

Piano Selection, Miss Cornelia Brownlee.

Soprano Solo, Miss Mildred Haynes.

—Address—

"WHAT THE LADIES THINK OF CHAUTAUQUA,"

Mrs. C. V. R. Mechin, President Ladies' Civic Improvement Association.

—Announcements—

M. Edwin Johnson

"Star Spangled Banner," Sung by the Audience.

"America," Sung by the Audience.

SUNDAY, JUNE 29th

9:30 A. M. Sunday School. (Classes for all ages.)

11:00 A. M. Morning Service. Sermon by Rev. T. De Witt Peake, Pastor
First M. E. Church, Lebanon, Ill.

4:30 P. M. Vesper Service.

8:00 P. M. Sacred Concert.

MONDAY, JUNE 30th

8:30 A. M. Devotional Hour.

8:00 P. M. CONCERT AND RECITAL. Mrs. Pierre Grigg, assisted by Miss
Mary Wade, Vocalist, and Miss Pauline Kramer, Pianist.

TUESDAY, JULY 1st

8:30 A. M. Devotional Hour.

10:00 A. M. Classes in Expressional Art, led by Mrs. Pierre Grigg.

10:30 A. M. Organization Chautauqua Chorus. Mr. Merritt A. Stipp, Chorus
Leader.Mr. Stipp is a member of the well known "Clarion Trio" of
Indianapolis. The association considers itself fortunate in hav-
ing secured the services of so capable a leader.

8:00 P. M. Motion Pictures.

WEDNESDAY, JULY 2nd

8:30 A. M. Devotional Hour.

10:00 A. M. Classes in Expressional Art, led by Mrs. Pierre Grigg.

10:30 A. M. Practice Hour, Chautauqua Chorus. Mr. Merritt A. Stipp, Leader.

8:00 P. M. Piano Selection, Miss Cornelia Brownlee.

8:15 P. M. GEO. E. COLBY, Cartoonist.

Mr. Colby draws with astonishing rapidity and ease, ac-
companying his work on the easel with an almost continuous
flow of entertaining, humorous, and instructive comment. He
keeps his audience divided between wonder and applause. Mr.
Colby gives an unique and interesting entertainment. He
comes to us highly recommended. Colby night is always looked
forward to with pleasure, as he never fails to please his
audience.

THURSDAY, JULY 3rd

- 8:30 A. M. Devotional Hour.
 10:00 A. M. Practice Hour, Chautauqua Chorus.
 8:00 P. M. Motion Pictures.

FRIDAY, JULY 4th

(Grand Independence Day Celebration)

No fireworks of any kind will be permitted on the grounds.

If you wish to avoid the noise and dangers incident to the cities on the Fourth of July, come to Chautauqua. Make your arrangements to stay over until Sunday night or Monday morning.

- 8:30 A. M. Devotional Hour.
 10:00 A. M. Boat Race, Grafton to Chautauqua. Two prizes offered.
 1:30 P. M. Flag Raising. Singing of Patriotic Songs, led by Chautauqua Chorus.
 2:00 P. M. Water Sports, in pool, boys' and girls' swimming matches, fancy diving, etc.
 3:30 P. M. Y. M. C. A. Colored Male Quartette Jubilee Singers.
 4:00 P. M. Base Ball Game.
 7:30 P. M. Colored Jubilee Singers at the Station.
 8:00 P. M. Grand display of fireworks on the river front.

SATURDAY, JULY 5th

- 8:30 A. M. Devotional Hour.
 10:00 A. M. Practice Hour, Chautauqua Chorus.
 11:00 A. M. Classed in Expressional Art, led by Mrs. Pierre Grigg.
 8:00 P. M. "YE OLDE TIME CONCERT," under auspices of Ladies' Civic Improvement Association.

Any entertainment given by the L. C. I. A. may be depended upon to be original, novel and worth going miles to hear. Our audience can rest assured this evening's concert will be fully up to expectations.

SUNDAY, JULY 6th

- 9:30 A. M. Sunday School. Classes for all ages.
 11:00 A. M. Morning service. Sermon by Rev. Albert Merritt Ewert, Pastor First M. E. Church, Pawnee, Ill.
 4:30 P. M. Vesper Service.
 8:00 P. M. Sacred Concert, led by Chautauqua Chorus.

MONDAY, JULY 7th

- 8:30 A. M. Devotional Hour.
 10:00 A. M. Practice Hour, Chautauqua Chorus.
 11:00 A. M. Classes in Expressional Art, led by Mrs. Pierre Grigg.
 8:00 P. M. "SONG AND STORY," by the Misses Isenberg, Smith and Eddy, in an evening of Song, Story and Music.

Their program is varied and decidedly interesting. There will not be a dull moment the entire evening.

TUESDAY, JULY 8th

- 8:30 A. M. Devotional Hour.
 10:00 A. M. Practice Hour, Chautauqua Chorus.
 11:00 A. M. Classes in Expressional Art, led by Mrs. Pierre Grigg.
 8:00 P. M. Motion Pictures.

WEDNESDAY, JULY 9th

- 8:30 A. M. Devotional Hour.
 10:00 A. M. Practice Hour, Chautauqua Chorus.
 11:00 A. M. Classes in Expressional Art, led by Mrs. Pierre Grigg.
 8:00 P. M. Concert by "CECELIA QUARTETTE." Mrs. Howard Watson, Leader.

The ladies composing the Cecelia Quartette need no introduction to a Piasa Chautauqua audience. They have appeared before us on several occasions in the past. There have been many requests for their engagement this year. The Cecelias render a strictly high class entertainment. Their hosts of friends will be delighted to know that they are to be with us again. Every member of this Quartette is a finished soloist.

THURSDAY, JULY 10th

- 8:30 A. M. Devotional Hour.
 10:00 A. M. Practice Hour, Chautauqua Chorus.
 11:00 A. M. Classes in Expressional Art, led by Mrs. Pierre Grigg.
 7:45 P. M. Cecelia Quartette.
 8:00 P. M. Motion Pictures.

FRIDAY, JULY 11th

- 8:30 A. M. Devotional Hour.
 10:00 A. M. Practice Hour, Chautauqua Chorus.
 11:00 A. M. Classes in Expressional Art, led by Mrs. Pierre Grigg.
 7:45 P. M. "Cecelia Quartette."
 8:00 P. M. CONCERT BY JERSEYVILLE TALENT, under direction of Miss Cornelia Brownlee.

This entertainment promises to be one of the best of the season, as Jerseyville will send her very best talent. Any entertainment which Miss Brownlee has in charge is sure to be excellent.

SATURDAY, JULY 12th

- 8:30 A. M. Devotional Hour.
 10:00 A. M. Practice Hour, Chautauqua Chorus.
 11:00 A. M. Classes in Expressional Art, led by Mrs. Pierre Grigg.
 7:45 P. M. "Cecelia Quartette."
 8:00 P. M. "MOCK TRIAL," under direction of L. C. I. A.

If you have never attended a mock trial, you should be on hand for this one. Better button up tight for fear you may split your sides laughing. Talk about "fun," here's where you get it in plenty. If you miss this, you will be sorry.

SUNDAY, JULY 13th

- 9:30 A. M. Sunday School. Classes for all ages.
 11:00 A. M. Morning Service. Sermon by Rev. Edwin J. Kulp, D. D., of Maple Avenue Methodist Church, St. Louis.
 4:30 P. M. Vesper Service.
 7:45 P. M. "Cecelia Quartette."
 8:00 P. M. Sacred Concert, led by Chautauqua Chorus.

MONDAY, JULY 14th

- 8:30 A. M. Devotional Hour.
 10:00 A. M. Practice Hour, Chautauqua Chorus.
 7:45 P. M. "Cecelia Quartette."
 8:00 P. M. CONCERT AND RECITAL, by the Misses Blanche Caughlan and Olga Hambuechen and Mrs. Dr. Little.

These ladies need no introduction to our audience, having appeared before us in the past with great success, since which time they have perfected and increased their repertoire. Press notices refer to their entertainments in a highly commendatory manner. We look forward to their appearance with much pleasure.

TUESDAY, JULY 15th

- 8:30 A. M. Devotional Hour.
 10:00 A. M. Practice Hour, Chautauqua Chorus.
 7:45 P. M. "Cecelia Quartette."
 8:00 P. M. Motion Pictures.

WEDNESDAY, JULY 16th

- 8:30 A. M. Devotional Hour.
 10:00 A. M. Practice Hour, Chautauqua Chorus.
 8:00 P. M. CHARLES R. TAGGERT, Entertainer.

In descriptive piano selections and songs, recitations and character sketches, ventriloquial dialogues, violin mimicry—An artistic, humorous and wholesome entertainment. His entertainments are a pronounced success from every standpoint. Mr. Taggart's aim is neither to teach nor preach, to advise nor lecture, but to turn pain into pleasure by music, worries into wonderment by mimicry, sadness to smiles by humor. Taggart is a drawing card at all Chautauquas.

THURSDAY, JULY 17th

- 8:30 A. M. Devotional Hour.
 10:00 A. M. Practice Hour, Chautauqua Chorus.
 8:00 P. M. Motion Pictures.

FRIDAY, JULY 18th

- 8:30 A. M. Devotional Hour.
 10:00 A. M. Practice Hour, Chautauqua Chorus.
 8:00 P. M. An evening of Instrumental Music, by Edwardsville Band.

SATURDAY, JULY 19th

- 8:30 A. M. Devotional Hour.
 10:00 A. M. Practice Hour, Chautauqua Chorus.
 2:00 P. M. Water Sports on River.
 3:30 P. M. Base Ball Game.
 8:00 P. M. MISS EVELYN BARGELT, Color Cartoonist.

Miss Bargelt's drawings are as beautiful as paintings. With her crayons of different colors, Miss Bargelt produces before her audiences many landscapes which appear as beautiful as paintings, while her humorous drawings are as funny as the comic section of the Sunday papers. While her pictures are taking shape under her deft fingers, she charms her hearers with flashes of wit and humor. She has the power to charm her audience as but few can. She never fails to win the approval and applause of her audience.

SUNDAY, JULY 20th

- 9:30 A. M. Sunday School. Classes for all ages.
 11:00 A. M. Morning Service. Sermon by Rev. John Henderson Moorehead, Pastor, First United Presbyterian Church, St. Louis, Mo.
 4:30 P. M. Vesper Service.
 8:00 P. M. Sacred Concert, Chautauqua Chorus.

MONDAY, JULY 21st

WOMAN'S WEEK

Conducted by Mrs. E. F. Ford, Greenfield, Ill.

A Week's Program of Great-Interest to Women

- 8:30 A. M. Devotional Hour.
 10:00 A. M. School of Household Science, "Classification and Elements of Food." The Balanced Ration.
 8:00 P. M. An evening of "DRAMA AND MUSIC," Mrs. Dr. Edgar Little and Miss Hunt.

These ladies, well known to most Piasa Chautauquans will be listened to with great pleasure. Their entertainments are refined and educational. We consider it a distinct advantage to be able to have them with us. We may safely assure our audience a very delightful evening.

TUESDAY, JULY 22nd

- 8:30 A. M. Devotional Hour.
 10:00 A. M. School of Household Science. "Vegetables and Fruits in the Diet." Demonstration.
 10:00 A. M. Practice Hour, Chautauqua Chorus.
 8:00 P. M. Motion Pictures.

WEDNESDAY, JULY 23rd

- 8:30 A. M. Devotional Hour.
 10:00 A. M. School of Household Science. "Meats and Their Substitutes." Demonstration.
 10:30 A. M. Practice Hour, Chautauqua Chorus.
 8:00 P. M. NOAH BEILHARZ.

Mr. Beilharz was secured after much difficulty because of his many advance engagements. We felt to leave him out of our program this season would be doing our people an injustice. Mr. Beilharz has had 15 years' platform experience and has given more than 3,000 entertainments, which will give the reader some idea of his popularity. He presents whole plays in monologue form and has made a specialty, the past season, of David Warfield's great play, "The Music Master," to the portrayal of whose intense situations he is temperamentally adapted. His other programs are "The Hoosier School Master," "The End of the World," "A Pair of Spectacles," and a miscellaneous program, using wigs and make-up. To miss seeing "Beilharz, the Great," is a downright loss.

THURSDAY, JULY 24th

- 8:30 A. M. Devotional Hour.
 10:00 A. M. School of Household Science. "Bread, Biscuits and Muffins." Demonstration.
 10:30 A. M. Practice Hour, Chautauqua Chorus.
 8:00 P. M. Motion Pictures.

FRIDAY, JULY 25th

- 8:30 A. M. Devotional Hour.
- 10:00 A. M. School of Household Science. "Salads and Salad Dressings." Demonstration.
- 10:30 A. M. Practice Hour, Chautauqua Chorus.
- 7:45 P. M. Piano Selection, Miss Cornelia Brownlee.
- 8:00 P. M. Address—"Man's Greatest Need," Mrs. E. F. Ford.
- 8:20 P. M. "OLD TIME SONGS." A real old time song fest, sung by the audience, led by Chautauqua Chorus.
- "America"
 "Lead Kindly Light"
 "Long, Long Ago"
 "Loves Old Sweet Song"
 "Old Black Joe"
 "The Old Oaken Bucket"
 "Speed Away"
 "We're Tenting Tonight"
 "Auld Lang Syne"
 "Good Night Ladies"

SATURDAY, JULY 26th

Mothers' Day

Closing Day of Womans' Week

- 8:30 A. M. Devotional Hour.
- 10:00 A. M. School of Household Science. "Bread Judging Contest." The bread score-card explained and demonstrated, Mrs. Ford.
- 2:00 P. M. Twentieth Century Baby Show. Babies' health contest. For the scientific development of the perfect child.
 Babies from six months to three years, eligible. Entries limited to 15 babies. Dr. H. H. Helbing of St. Louis will score the babies according to scientific principles, and each parent will be given a card stating the percentage on points of their babies. Looks do not enter into this contest. It's health only, which counts. Mrs. Torrence and a corps of nurses will assist Dr. Helbing. Three prizes will be given.
- 2:30 P. M. Needlework Contest. Exhibition of embroidery and crocheting.
 Class A—Best piece of work, under 12 years.
 Class B—Best piece of work, 12 to 18 years.
 Class C—Best piece of work, over 18 and under 80 years.
 Prizes given in each class.
- 3:00 P. M. Darning Contest. Open to girls under 16 years.
 Best darn in table linen, not less than one inch.
 Best darn in stocking, not less than one inch.
- 3:30 P. M. Base Ball Game.
- 4:00 P. M. Short Talks on "Eugenics" and "Hygiene."
- 4:30 P. M. Babies will be on exhibition.
- 8:00 P. M. Sketch, "LITTLE WOMEN," by Dramatic Club.

Readings by Mrs. Chas. Horner, Exponent of Child Verse, and President "Wednesday Club," East St. Louis. Auspices of Ladies' Civic Improvement Association.

"P. S.—Buy a flower in memory of your mother."

BIBLE CONFERENCE WEEK

JULY 27th TO AUGUST 2nd

SUNDAY

- 9:30 A. M. Sunday School. Dr. Franklin McElfresh, Superintendent.
Lesson: "Moses' Request Refused," Ex. 4:29 6:1.
- 11:00 A. M. Morning Worship. Preaching by Rev. W. J. Williamson, D. D.
Theme: "The Heart of the Great Apostle."
Vocal solo, Miss Mildred Haynes.
Congregational singing led by Mr. Erskine Reed.
- 4:30 P. M. Vesper Service. Address by Dr. Williamson.
- 8:00 P. M. Sacred Concert directed by Mr. Erskine Reed.

MONDAY

- 9:00 A. M. Chorus led by Mr. Erskine Reed.
Mr. Reed is one of the most experienced chorus directors in the middle west. He has had charge of the music in many important conventions. We consider ourselves fortunate in securing his service for Bible Conference Week, and we hope a large number of Piasa people will avail themselves of this unusual opportunity for chorus practice.
- 9:00 A. M. Children's Hour, conducted by Miss Nona Lee Dover.
Among all the speakers during Bible Conference Week, none will be more appreciated than Miss Dover. It is the desire of the management that this week shall be one of inestimable blessing to the children, and no one is better qualified for the work than Miss Dover. It is to be hoped that the children will all be present at the Monday meeting. We are confident there will be no difficulty with the attendance during the remainder of the week. Miss Dover has charge of a department of work of one of the National Sunday School Boards, and at the present time is engaged in preparing some of its graded lesson manuals.
- 9:45 A. M. Religious Education Hour, Dr. Franklin McElfresh. Subject, "Non-religious Education the Work of the State."
The coming of Dr. McElfresh, who is superintendent of Teacher Training of the International Sunday School Association, presents an opportunity not often afforded Piasa Chautauquans. Dr. McElfresh is a man of rare culture, broad travel, and thorough acquaintance with the problems of the religious world. His addresses will be remarkably helpful to Sunday School teachers and officers, as well as to parents, and of unusual interest to all who are concerned with the present day movements in the kingdom of God.
- 10:30 A. M. Address. Subject, "A Young Man's Religion," I by Prof. Howard G. Colwell.
Mr. Colwell needs no introduction to our people. Throughout the middle West he is known as one of the most successful teachers and leaders of young men. He has delivered many addresses on the problems of young men, and has devoted earnest study and systematic effort to their practical solution. His subject is most timely, and his addresses will be exceedingly profitable to those who are so fortunate as to hear him. The problem of saving and developing the young man is the most serious work before the modern church, and Mr. Colwell's discussion of this problem ought to interest everybody.

- 11:15 A. M. Bible Hour. Expository Study of the Book of Ephesians by Dr. Williamson.
- 6:45 P. M. Sunset Meeting at the Railroad Station. Song Service led by Mr. Erskine Reed and brief address by Dr. Williamson.
- 8:00 P. M. Evening of Song and Story.

TUESDAY.

- 9:00 A. M. Song Service, led by Mr. Erskine Reed.
- 9:00 A. M. Children's Hour conducted by Miss Dover.
- 9:45 A. M. Religious Education Hour. Subject, "Religious Education the Work of the Churches," Dr. McElfresh.
- 10:30 A. M. "A Young Man's Religion," II by Prof. Colwell.
- 11:15 A. M. Expository Study in Ephesians by Dr. Williamson.
- 6:45 P. M. Sunset Meeting at the Station.
- 8:00 P. M. Song Service, led by Chautauqua Chorus.
Address by Dr. Williamson. Subject, "A Religion of Sunshine."

WEDNESDAY

- 9:00 A. M. Song Service led by Mr. Erskine Reed.
- 9:00 A. M. Children's Hour, led by Miss Dover.
- 9:45 A. M. Religious Education Hour. "The Sunday School and the Bible," Dr. McElfresh.
- 10:30 A. M. Address by Prof. Frederic Oakes Sylvester.
Prof. Sylvester needs no introduction to Piasa people. He has international fame as the poet and painter of the Mississippi. His paintings have taken high rank among those who love the beautiful in nature, and his volume of verses entitled, "The Great River," has immortalized the history and sentiment of our noble Father of Waters.
- 11:15 A. M. Bible Hour. Expository Study in Ephesians by Dr. Williamson.
- 6:45 P. M. Sunset Meeting at the Station.
- 8:00 P. M. Song Service, led by Chautauqua Chorus.
Address by Dr. McElfresh.

THURSDAY

- 9:00 A. M. Song Service led by Mr. Erskine Reed.
- 9:00 A. M. Children's Hour, led by Miss Dover.
- 9:45 A. M. Religious Education Hour. "The Sunday School as a Training for Social Service," by Dr. McElfresh.
- 10:30 A. M. Address by Prof. Frederic Oakes Sylvester.
- 11:15 A. M. Bible Hour. Expository Study in Ephesians by Dr. Williamson.
- 6:45 P. M. Sunset Service at the Station.
- 8:00 P. M. Motion Pictures.

FRIDAY

- 9:00 A. M. Song Service led by Mr. Erskine Reed.
 9:00 A. M. Children's Hour, led by Miss Dover.
 9:45 A. M. Religious Education Hour. "The Sunday School a Field for the Christian Worker," by Dr. McElfresh.
 10:30 A. M. Address: "The Child and the Sunday School Teacher," by Miss Nona Lee Dover.
 11:15 A. M. Bible Study Hour. Expository Study in Ephesians by Dr. Williamson.
 6:45 P. M. Sunset Service at the Station.
 8:00 P. M. Motion Pictures.

SATURDAY

- 9:00 A. M. Song Service led by Mr. Erskine Reed.
 9:00 A. M. Children's Hour, led by Miss Dover.
 9:45 A. M. Religious Education Hour. "The Sunday School and the Nation," by Dr. McElfresh.
 10:30 A. M. Address: "The Child and the Home," by Miss Nona Lee Dover.
 11:15 A. M. Bible Study Hour. Expository Study in Ephesians by Dr. Williamson.
 6:45 P. M. Sunset Meeting at the Station.
 8:00 P. M. An evening of song and story.

SUNDAY, AUGUST 3rd

- 9:30 A. M. Sunday School. Classes for all ages.
 11:00 A. M. Morning Service. Sermon by Rev. Fay Merriott, Pastor, 1st M. E. Church, Brighton, Ill.
 4:30 P. M. Vesper Service.
 8:00 P. M. Sacred Concert.

MONDAY, AUGUST 4th

- 8:30 A. M. Devotional Hour.
 10:00 A. M. Practice Hour, Chautauqua Chorus.
 8:00 P. M. RECITAL, by Morse School of Expression, St. Louis.
 The character of work furnished by the faculty and students of the Morse School of Expression is too well known to require comment. Suffice to say, it is all strictly first-class in every respect and a credit to the institution its people represent. Something good and genuinely entertaining may confidently be looked forward to. The Morse School has never been known to disappoint an audience.

TUESDAY, AUGUST 5th

- 8:30 A. M. Devotional Hour.
 10:00 A. M. Practice Hour, Chautauqua Chorus.
 8:00 P. M. Motion Pictures.

WEDNESDAY, AUGUST 6th

- 8:30 A. M. Devotional Hour.
 10:00 A. M. Chorus.
 8:00 P. M. Dramatic Readings, by Mrs. Chas. M. Horner.

Mrs. Charles M. Horner is a dramatic reader of great ability. The wide difference in the character of her work shows her to be a most wonderful artist. She is a charming and versatile young woman, capable of holding any audience and sending them away satisfied.

THURSDAY, AUGUST 7th

- 8:30 A. M. Devotional Hour.
 10:00 A. M. Practice Hour, Chautauqua Chorus.
 8:00 P. M. Motion Pictures.

FRIDAY, AUGUST 8th

- 8:30 A. M. Devotional Hour.
 10:00 A. M. Practice Hour, Chautauqua Chorus.
 8:00 P. M. "YE OLD FASHIONED SPELLIN' BEE," by Chautauquans.
 An old fashioned Spelling Bee always furnishes a bushel of fun. For downright, wholesome amusement, nothing excels this old time form of entertainment.

SATURDAY, AUGUST 9th

- 8:30 A. M. Devotional Hour.
 10:00 A. M. Practice Hour, Chautauqua Chorus.
 2:00 P. M. Water Sports on River. Prizes given.
 3:30 P. M. Base Ball Game.
 8:00 P. M. "LILIPUTIAN WEDDING," by Chautauqua Talent.
 Under auspices Ladies' Civic Improvement Association. 'Nuff sed. Never before seen at Chautauqua.

SUNDAY, AUGUST 10th

- 9:30 A. M. Sunday School. Classes for all ages.
 11:00 A. M. Morning Service. Sermon by Rev. J. Wesley Cummins, of First Methodist Church, East St. Louis, Ill.
 4:30 P. M. Vesper Service.
 8:00 P. M. Sacred Concert.

MONDAY, AUGUST 11th

Children's Week

- 8:30 A. M. Devotional Hour.
 9:30 A. M. Organization Children's Chorus, by Miss Flora B. Dawson.
 10:00 A. M. Practice Hour, Chautauqua Chorus.
 8:00 P. M. "PROFESSIONAL SPELLING MATCH," by experts from St. Louis, East St. Louis, Alton, Jerseyville, and others. A battle of the Giants.

TUESDAY, AUGUST 12th

- 8:30 A. M. Devotional Hour.
 9:30 A. M. Children's Chorus. "Tales from Land of Wooden Shoes," led by Miss Flora B. Dawson.
 10:00 A. M. Practice Hour, Chautauqua Chorus.
 8:00 P. M. MR. SIDNEY LANDON, Character Artist.

Mr. Landon's impersonations are wonderful, his work artistic. He presents characters as they exist, and appears in make-up for each character, changing rapidly before his audience.

Mr. Landon introduces a line of impersonations decidedly out of the ordinary—Mark Twain, Bill Nye, the German Politician; the Swede, the Dutchman—these and many others are portrayed and faithfully impersonated in quick succession in full view of the audience by merely a few swift touches of a brush and the donning of a wig, mustache, etc.

His selections are both pathetic and humorous. Mr. Landon is an artist of remarkable ability. A rare treat is promised.

WEDNESDAY, AUGUST 13th

- 8:30 A. M. Devotional Hour.
 9:30 A. M. Children's Chorus, Stories "Straight from China," led by Miss Dawson.
 8:00 P. M. Motion Pictures.

THURSDAY, AUGUST 14th

Epworth League Conference

(August 14th to 17th Inclusive)

Under co-operation of the Central Office of Epworth League

Morton M. Wolff, Chairman, No. 216 International Life Bldg., St. Louis; Olive 686.

W. F. Schelp, Secretary, No. 604 Merchants-Laclede Bldg., St. Louis; Main 593.
Registration fee for delegates, \$1.00.Admission to Chautauqua grounds during the Conference, free to delegates.
Delegates must secure badge from their President or from Conference Committee at Chautauqua.

- 6:30 A. M. Sunrise Prayer Meeting, led by President Harmon.
 8:00 A. M. Class on Bible Study, led by President Harmon.
 9:00 A. M. Class on Church Study, led by Rev. B. F. Jones.
 Class on Mercy and Help, led by Miss Isabelle Horton.
 Class on Junior Work, led by Miss Louise Dalby.
 10:00 A. M. Class on Christian Stewardship, led by Rev. S. B. Campbell.
 Class on Missions, led by Rev. W. H. Teeter.
 Class on Social and Literary Work, led by Rev. B. F. Jones.
 11:00 A. M. Class on Senior Methods. Led by Dr. Jno. Thompson.
 1:00 P. M. to 6 P. M. Recreation.
 7:10 P. M. Group Prayer Meetings.
 7:30 P. M. Song and Testimony Meeting, led by W. F. Schelp. Singing in charge of Rev. R. A. Hunt.
 8:00 P. M. Sermon by Rev. F. L. Geyer. Singing led by Rev. R. A. Hunt.

FRIDAY, AUGUST 15th

Epworth League Conference

- 6:30 A. M. Sunrise Prayer Meeting, led by Rev. B. F. Jones.
 8:00 A. M. Class on Bible Study, led by President Harmon.
 9:00 A. M. Class on Church History, led by Rev. B. F. Jones.
 Class on Mercy and Help, led by Miss Isabelle Horton.
 Class on Junior Work, led by Miss Louise Dalby.
 10:00 A. M. Class on Christian Stewardship, led by Rev. S. B. Campbell.
 Class on Social and Literary Work, led by Rev. B. F. Jones.
 Class on Missions, led by Rev. W. H. Teeter.
 11:00 A. M. Class on Senior Methods. Led by Dr. Jno. Thompson.
 6:40 P. M. Group Prayer Meetings.
 7:00 P. M. Epworth League Meeting, led by President of the St. Louis German Epworth League Union. Singing in charge of Rev. R. A. Hunt.
 8:00 P. M. Sermon by Rev. H. J. Diercks. Singing led by Rev. R. A. Hunt.

SATURDAY, AUGUST 16th

Epworth League Conference

- 6:30 A. M. Sunrise Prayer Meeting, led by Rev. R. A. Hunt.
 8:00 A. M. Class on Bible Study, led by President Harmon.
 9:00 A. M. Class on Church History, led by Rev. B. F. Jones.
 Class on Mercy and Help, led by Miss Isabelle Horton.
 Class on Junior Work, led by Miss Louise Dalby.
 10:00 A. M. Class on Christian Stewardship, led by Rev. S. B. Campbell.
 Class on Social and Literary Work, led by Rev. B. F. Jones.
 Class on Missions, led by Rev. W. H. Teeter.
 11:00 A. M. Class on Senior Methods. Led by Dr. Jno. Thompson.
 7:10 P. M. Group Prayer Meetings.
 7:30 P. M. Song and Testimony Service, led by John R. Longmire. Singing
 in charge of Rev. R. A. Hunt.
 8:00 P. M. Sermon, by REV. W. H. TEETER. Singing led by Rev. R. A.
 Hunt.

SUNDAY, AUGUST 17th

- 6:30 A. M. Sunrise Prayer Meeting, led by Miss Isabelle Horton.
 9:30 A. M. Sunday School.
 11:00 A. M. Morning Service. Sermon by President John H. Harmon of
 McKendree College.
 3:00 P. M. Consecration Service, led by Dr. John Thompson.
 7:00 P. M. Epworth League Meeting, led by the President of the St. Louis
 Epworth League Union.
 8:00 P. M. Evangelistic Sermon, by Rev. S. B. Campbell.

MONDAY, AUGUST 18th

- 8:30 A. M. Devotional Hour.
 9:30 A. M. Children's Drill & Folk Dance, "Japan Fairy Lore" (in costume),
 led by Miss Flora B. Dawson.
 8:00 P. M. ENTERTAINMENT, by Chautauqua Talent. Readings, Music,
 Solos, etc. An enjoyable evening is assured.

TUESDAY, AUGUST 19th

- 8:30 A. M. Devotional Hour.
 9:30 A. M. Children's Drill and Folk Lore, led by Miss Flora B. Dawson.
 8:00 P. M. Motion Pictures.

WEDNESDAY, AUGUST 20th

- 8:30 A. M. Devotional Hour.
 9:30 A. M. Children's Drill and Folk Lore, led by Miss Flora B. Dawson.
 8:00 P. M. RECITAL BY MRS. BESSIE BOWN RICKER.

Mrs. Ricker has an exceptionally pleasing personality and address which gives her work a charm that is peculiarly its own. Her repertoire includes selections from Riley, Field, etc., etc., and many anonymous and original monologues. Mrs. Ricker also gives clever impersonations in French and Negro dialect and a number of pleasing society sketches. Her work is exquisite in delicacy and poise. To hear her is a rare treat.

THURSDAY, AUGUST 21st

(W. C. T. U. Day)

- 8:30 A. M. Devotional Hour.
 9:30 A. M. Children's Drill and Folk Dance, led by Miss Flora B. Dawson.
 2:15 P. M. A Chorus from the Young Ladies' Bible Class of the Congregational Sunday School, Alton, Ill.
 2:30 P. M. "Scientific Temperance Instruction in Our Public School," Prof. L. W. Ragland, Greenfield; Miss Adelia Miner Randall, Alton.
 7:30 P. M. Chorus Young Ladies' Bible Class, Congregational Sunday School, Alton.
 Soloists—Miss Emily Louise Joestring and Miss Lilian Marie Bauer.
 Reading, by Mrs. Homer Willard Davis, Alton, Ill.
 8:00 P. M. Address, Mrs. Frances E. Beauchamp, State President of Womans' Christian Temperance Union, Lexington, Ky.

FRIDAY, AUGUST 22nd

(W. C. T. U. Day)

- 8:30 A. M. Devotional Hour.
 10:00 A. M. Annual meeting and election of officers of Chautauqua Woman's Christian Temperance Union at W. C. T. U. Cottage.
 2:15 P. M. Concert by Medora young people.
 2:30 P. M. Institute conducted by Mrs. Frances E. Beauchamp, Lexington, Kentucky.
 Health and Heredity, Mrs. E. F. Ford, Greenfield, Ill.
 The Mischief Trip of Alcohol, Miss Grace Enos, Jerseyville, Ill.
 7:30 P. M. Concert—Young people of Jerseyville, Ill.
 8:00 P. M. Grand Gold Medal Contest. Contestants from Madison, Macoupin, Greene and Jersey Counties.

SATURDAY, AUGUST 23rd

- 8:30 A. M. Devotional Hour.
 9:30 A. M. Children's Drill and Folk Dance, led by Miss Flora B. Dawson.
 2:30 P. M. Water Sports. Prizes given.
 3:30 P. M. Base Ball Game.
 8:00 P. M. "THE LITTLEST REBEL," an Interpretative Recital, interspersed with appropriate songs, by Misses Sadie and Ruth Starr.

"The Littlest Rebel," by Edward Peple, is widely varied with humor and pathos. The story is placed in the South, during the darkest, bitterest period of the Civil War. Herbert Cary of the Confederate Army leaves his little daughter Virgie, alone, in a cabin, in the Negro quarters, their own home having been burned by the Yankees. He is being searched for by a Cavalry troop in command of Lieutenant-Colonel Morrison of the Union Army.

A reward of \$500.00 is offered to take him dead or alive, for having entered the Union lines.

Those who saw Dustin Farnum in the play, will appreciate the rare treat in prospect in the reading by Miss Starr, a young lady of charming personality, and fully capable of doing her subject justice.

SUNDAY, AUGUST 24th

- 9:30 A. M. Sunday School. Classes for all ages.
 11:00 A. M. Morning Service. Sermon by Rev. W. F. Aull, D. D., Pastor, First Presbyterian Church, East St. Louis, Ill.
 4:30 P. M. Vesper Service.
 8:00 P. M. Sacred Concert, led by Chautauqua Chorus.

MONDAY, AUGUST 25th

- 8:30 A. M. Devotional Hour.
 9:30 A. M. Children's Drill and Marches.
 8:00 P. M. Piano Selection, Miss Cornelia Brownlee.

"OLD TIME SONG FEST"

- Sung by the Audience
 Led by Chautauqua Chorus
 Baritone Solo—"Rocked in the Cradle of the Deep"
 Soprano Solo—"Love's Old Sweet Song"
 "Annie Laurie"
 "Hail Columbia"
 "The Battle Cry of Freedom"
 "Massa's in the Cold Ground"
 "The Last Rose of Summer"
 "My Maryland"
 "Old Folks at Home"
 "Home, Sweet Home"

TUESDAY, AUGUST 26th

- 8:30 A. M. Devotional Hour.
 9:30 A. M. Children's Drill and Folk Dance, led by Miss Dawson.
 8:00 P. M. Motion Pictures.

WEDNESDAY, AUGUST 27th

- 8:30 A. M. Devotional Hour.
 9:30 A. M. Children's Drill and Folk Dance, led by Miss Flora B. Dawson.
 8:00 P. M. Motion Pictures.

THURSDAY, AUGUST 28th

- 8:30 A. M. Devotional Hour.
 9:30 A. M. Folk Dance and Children's Drill, led by Miss Flora B. Dawson.
 8:00 P. M. CANTATA, "MISSION OF THE ROSE," with Marches and Folk Dances by the Children, directed by Miss Flora B. Dawson.

FRIDAY, AUGUST 29th

- 8:30 A. M. Devotional Hour.
 8:00 P. M. Motion Pictures.

SATURDAY, AUGUST 30th

Closing Night

- 8:30 A. M. Devotional Hour.
 3:30 P. M. Base Ball Game.
 8:00 P. M. "CHAUTAUQUA JUBILEE," under auspices Ladies' Civic Improvement Association.

The ladies promise the best entertainment of the season. The "Jubilee" last season was a genuine hit. The Auditorium was packed and every one present, highly pleased.

The entertainment set for this, the closing night, will excel anything ever attempted before by the ladies.

The big Jubilee on closing night always draws a large attendance from St. Louis and towns surrounding. A treat is in prospect which none can afford to miss. Keep your eye on this night.

SUNDAY, AUGUST 31st

- 9:30 A. M. Sunday School. Classes for all ages.
 11:00 A. M. Morning Service. Sermon by Rev. Samuel G. Huey, Pastor, Grand Avenue United Presbyterian Church, St. Louis.
 4:30 P. M. Vesper Service.
 8:00 P. M. Sacred Concert, led by Chautauqua Chorus, closing with, "God be with you 'till we meet again."

PIASA CHAUTAUQUA NOTES

BOY SCOUTS AT CHAUTAUQUA

The Directors, appreciating the importance of the Boy Scout movement, offer free admission to all Boy Scouts during encampment in order to encourage the various troops to hold their encampment at Chautauqua. There is plenty of space for encampments, and no more beautiful place can be found than at Piasa Chautauqua. We will also assist the Scout Masters in preparing their encampment and in every other way possible to make their encampment at Chautauqua most enjoyable. Correspondence with the manager solicited.

PRIZES FOR FLOWER GARDENS

For the purpose of encouraging the planting of flowers and beautifying the Grounds, the Board of Directors offer the following prizes for the best flower beds. First prize, \$12; second prize, \$8; third prize, \$5.

GROCERIES AND MEATS

The Association operates a grocery and meat shop where may be found at all times, a good assortment of groceries, fruits in season, fresh and dried meats at reasonable prices.

ICE

Daily deliveries of Ice will be made from icehouse located on the grounds—prices reasonable.

BOARDING HOUSES

There are numerous boarding houses in different parts of the grounds, where good accommodations can be had at satisfactory rates. See partial list of Hotels and Boarding Houses on page 40.

EXCURSION RATES.

Excursion rates are offered during the entire Assembly period, by both railroads and steamboats.

Many beautiful and interesting spots can be reached by short trips from Chautauqua, which can be made on foot or by boat. Among these are the Jerseyville Road, with its wealth of wild flowers. Nugent's Bluff, Elsay, Portage des Sioux, Grafton, Babb's Hollow, Fern Valley, Illinois River, Alton, Jerseyville, Lover's Leap, and the Indian Mounds.

August 21st and 22nd will be known as Woman's Christian Temperance Union's Days at Chautauqua. The W. C. T. U. ladies will have charge of the program during these days with a number of fine speakers, a gold medal contest, and other features that will be very interesting. See Program August 21st and August 22nd.



W. C. T. U. COTTAGE, CHAUTAUQUA, ILL.

The W. C. T. U. Cottage contains 12 rooms. Special low rates are made for week, month or season. Prior to June 1st address Mrs. Jesse Hanan, Superintendent, Springfield, Ill. After June 1st address Chautauqua, Ill. Correspondence solicited.

A genuine relief from the worries and heat of the city is the "week end" stay from Saturday to Monday morning at Piasa Chautauqua. Why not buy a season ticket? Good June 1st to September 6th. Price only \$4.00—admits you to everything.

Ninety minutes after leaving St. Louis, the office or shop-tired man or woman finds perfect rest and simple pleasure and amusements, and a bed where blankets are always necessary, so cool are the nights at Piasa Chautauqua.

Piasa Chautauqua was not organized for the purpose of making money. Its revenue is derived from gate admissions, concessions, assessments against property holders, and gifts from friends. Buy a season ticket. Good June 1st to September 6th. Price only \$4.00. Best investment you can make.

From June 1st to Sept. 6th, every person on the Piasa Chautauqua Grounds is required to have a ticket.

See Rates of Admission on Page 2.

See item Page 40 reference to Railroad Time Table.



“SUMMER REST”

“Summer Rest,” the vacation resort for business women, has for many years been successfully conducted by the managers of the Woman’s Christian Home, St. Louis, Mo.

It is permanently located on one of the most attractive sites of the beautiful grounds of Piasa Chautauqua.

It cordially invites business women who desire a pleasant, restful vacation at small expense.

Any woman of good moral character, earning her living, and mother and sisters dependent upon her, are cordially invited to spend their vacation at Summer Rest. Board \$3.00 per week; special terms when necessary.

Summer Rest will open June 1st. Until the industrial women occupy the entire hotel, friends of the Christian Home are invited to hold house-parties at a low rental. For such a purpose no more charming spot can be chosen. Full particulars given at

ST. LOUIS WOMEN’S CHRISTIAN HOME,
1814 Washington Avenue,
St. Louis, Mo.

(After June 1st, Chautauqua, Ill.)

KING'S DAUGHTERS' SUMMER HOME.

Conducted by the Piasa Chautauqua Circle of the King's Daughters & Sons. The object is to give an outing to worthy, self-supporting women and girls where they can find amusement, rest, a library and have all the advantages of the Chautauqua lectures and entertainments. The Home is non-sectarian. Rooms and board, \$2.00 per week. Reference from some responsible person required. Home open July 1st to Sept. 1st.



THE KING'S DAUGHTERS' SUMMER HOME.

All wage-earning women are eligible. For further information write to Mrs. Pauline Collins, 1610 Henry Street, Alton, Ill., before July 1st, or Mrs. A. T. Flint, 2620 Tennessee Avenue, St. Louis, Mo. Bell Phone, Grand 212SR. After June 1st, Chautauqua, Ill.

The Illinois Branch of the International order of The King's Daughters & Sons will hold their State Convention at Chautauqua in September.

Smile! A smile goes farther than a frown and costs no more. Smile and make others smile. Endeavor to make every one about you happy and content. Don't fail to do your part in helping to make this old world a more cheerful place to live in. Don't frown—Smile! now, that's better!

Boys and girls can depend on having a fine time at Chautauqua. Come and meet your friends, you will find most of them here.

A few types of cottages, selected from among the 125
now at Chautauqua.



"DAD'S DEN"

Mrs. E. G. Kupferle, St. Louis.



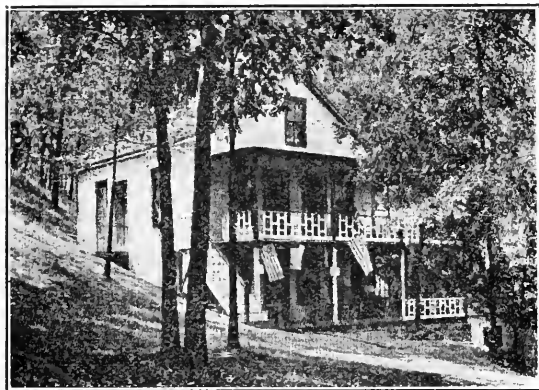
"RIVERVIEW"

D. W. Woods, St. Louis, Mo.



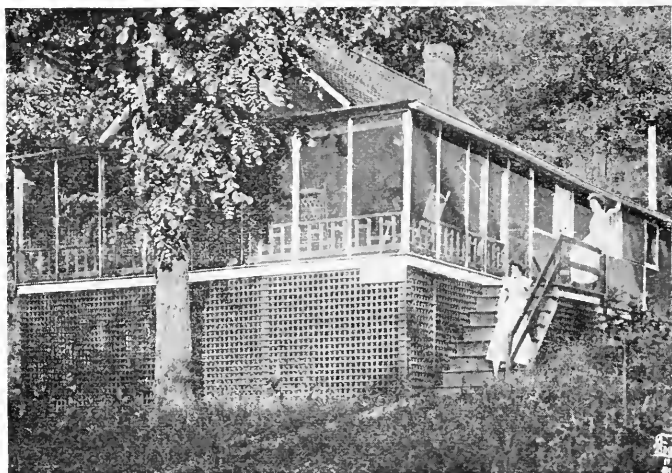
"ROCKY BEND"

L. W. Manning, St. Louis, Mo.



THE "ENGLISH COTTAGE"

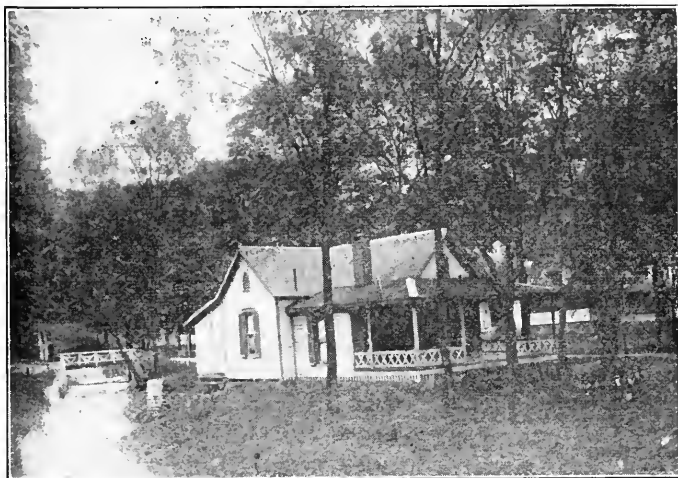
J. N. English, Jerseyville, Ill.



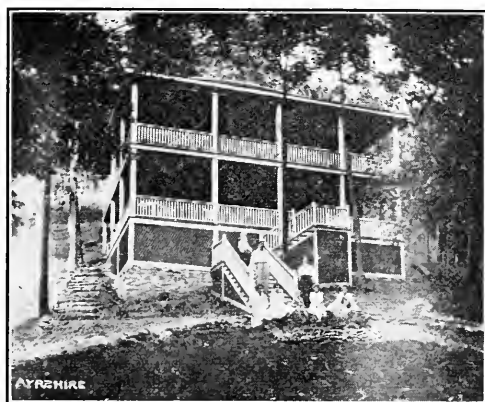
"ELMHURST"
Geo. H. Steen, St. Louis.



"OUATOGA LODGE"
Mrs. Gus. V. R. Mechin, St. Louis, Mo.



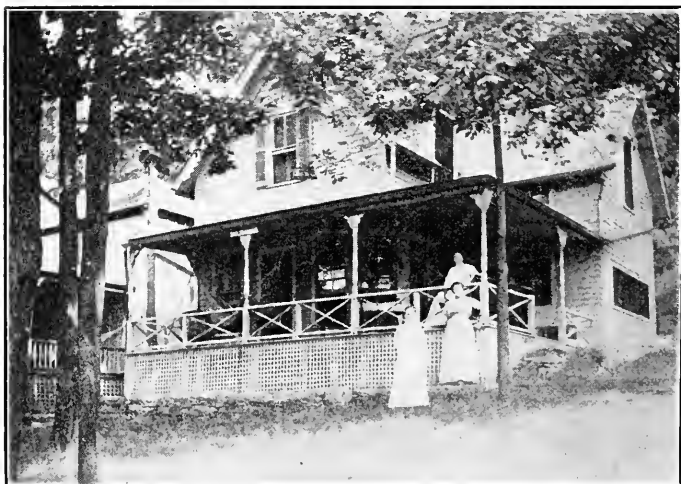
"SLEEPY HOLLOW"
Dr. Yerkes, Upper Alton, Ill.



"AYRSHIRE"
L. N. Burns, Racine, Wis.



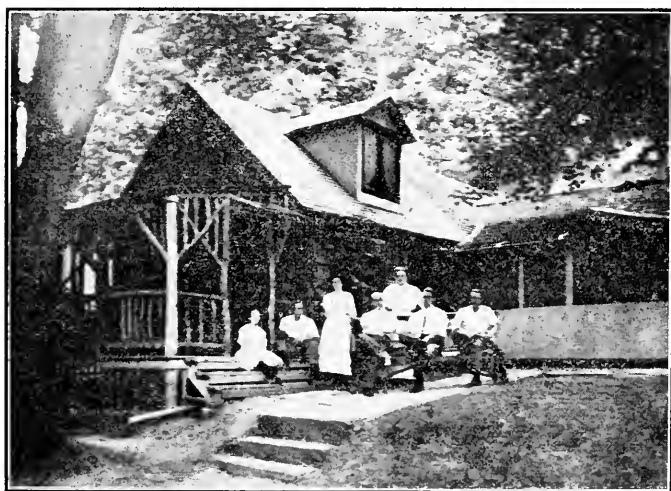
"SYCAMORE LODGE"
Mrs. Geo. Caughlan, East St. Louis, Ill.



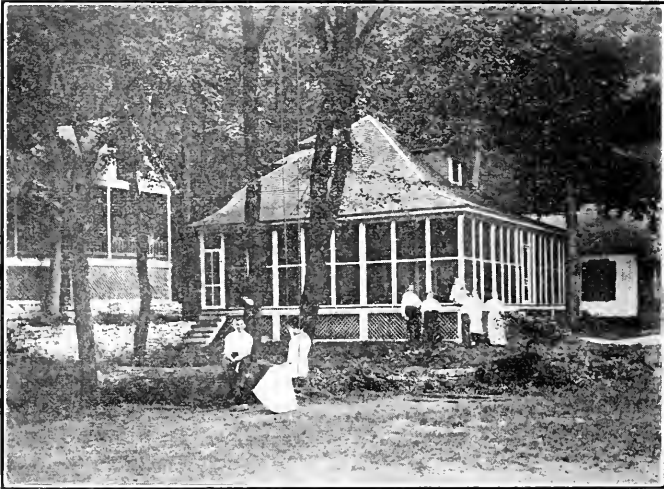
"OAKHURST"
Mrs. J. A. Corrington, East St. Louis, Ill.



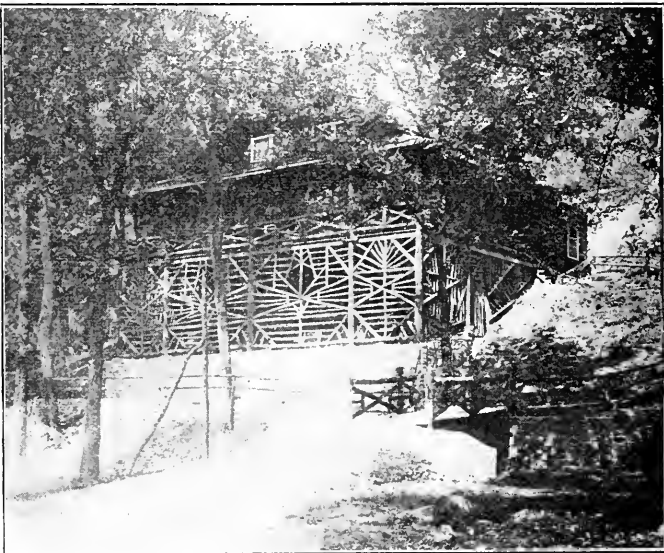
"BROWN GABLES"
Geo. H. Broeder, St. Louis.



THE "LOG CABIN"
C. Bernet, St. Louis, Mo.

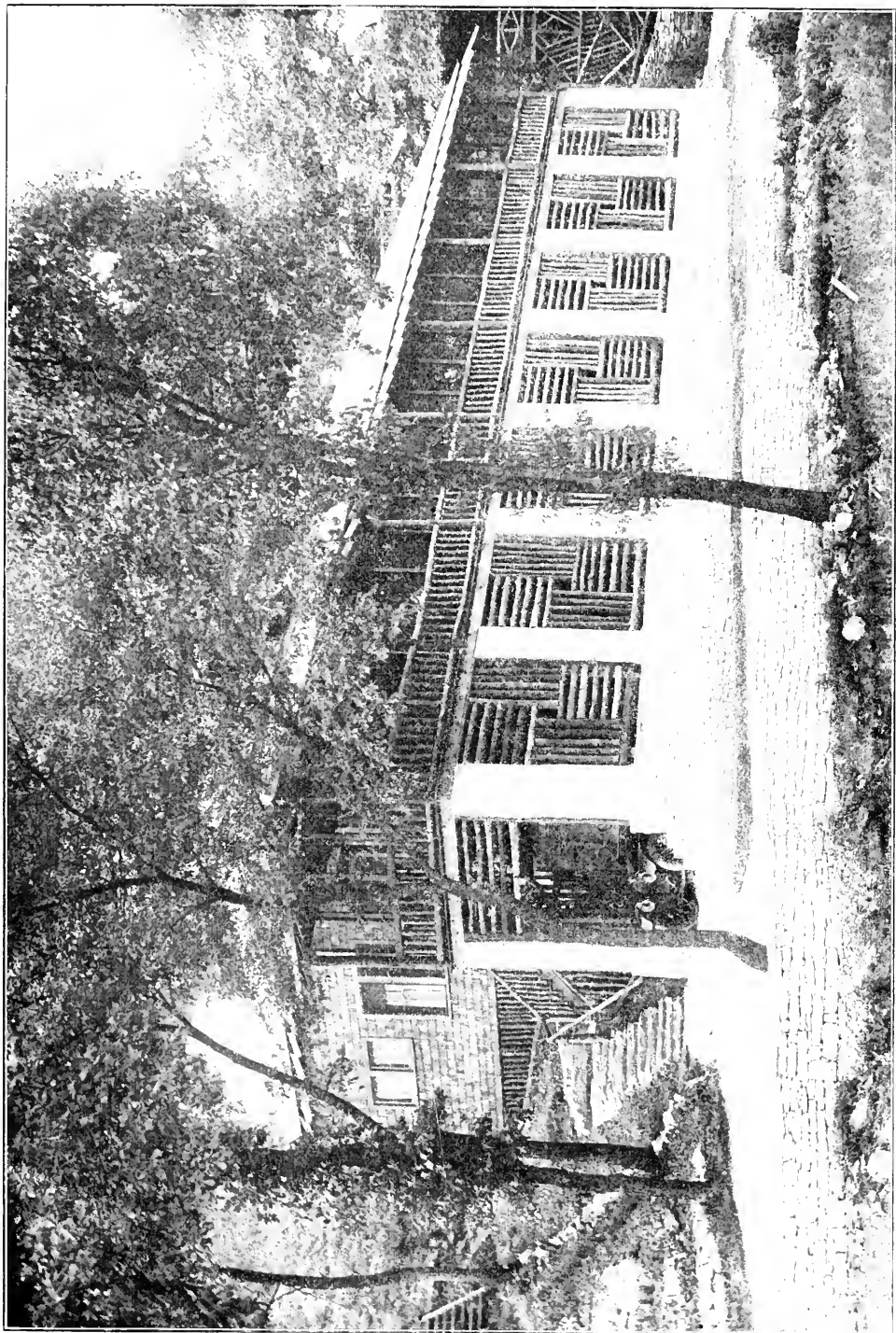


THE "WYCKOFF"
Mrs. D. A. Wyckoff, Upper Alton, Ill.



"ALLE-QUIP-PA LODGE"
A. N. Lewis, St. Louis, Mo.

"WEE-TA-MOO LODGE"
W. E. Caulfield, St. Louis, Mo.



HOME OF S. S. PINGREE, ST. LOUIS, BUILT IN 1911.

Cottage Owners at Chautauqua

Name of Owner.	Address	Name of Cottage.
Anderson, Mrs. Mary J.,	Carlinville, Ill.	Gram's Shelter
Anderson, Mrs. J. C.,	Carlinville, Ill.	"The Roost"
Andrews, Mrs. Emma, et al.,	Brighton, Ill.	Trabue
Barnes, Rev. Edmond, Odin, Ill.		Kentucky Home
Beckwith, A. M., 611 N. 32d St.,	East St. Louis.	Takitzay
Behymer, F. A., Lebanon, Ill.		Bee-at-eze
Bell, Mrs. Hattie S., Medora, Ill.		Bellevue
Bell, Mrs. Hattie, Medora, Ill.		Watson Cottage
Bell, Mrs. Hattie S., Medora, Ill.		Summer Rest
Berñet, Christian, 5557 Cates Ave.,	St. Louis.	Log Cabin
Bliss, Florence and Marie, 5400 Vernon Ave.,	St. Louis.	Wa-wo-naissa
Bliss, Mrs. H. C., St. Louis.		Bliss With Inn
Bringhurst, R. P., 1830 Locust St.,	St. Louis.	Bringhurst
Broeder, Geo. H., 4644 Wagoner Pl.,	St. Louis.	Brown Gables
Brown, Mrs. Mary A., North Alton, Ill.		W. R. C.
Buckley, Mrs. Mary B., 414 Leverett Ave.,	Upper Alton.	Bide-a-Wee
Burruss, H. D., Carrollton, Ill.		Greenwood
Burns, L. N., Racine, Wis.		Ayrshire
Catlin, Miss M. E., 513 W. State St.,	Jerseyville, Ill.	White Walnut
Caughlan, D. W., East St. Louis, Ill.		Bonnie Brae
Caughlan, D. W., 609 N. 11th St.,	East St. Louis, Ill.	House of David
Caughlan, Geo. S., 625 N. 33rd St.,	East St. Louis, Ill.	Sycamore Lodge
Clark, Mrs. Kathleen, 1123 St. Clair Ave.,	East St. Louis.	Inglewood
Caulfield, W. E., 1399 Union Ave.,	St. Louis.	Wee-ta-moo
Corrington, Mrs. Juliet A.		Oakhurst
Durston, Mrs. John, Witt, Ill.		Woodland
Eastman, Mrs. John N., Grafton, Ill.		Eastman
Ellison, Mrs. S. C., St. Louis.		Solid Comfort
English, J. N., Jerseyville, Ill.		English
Emerson, T. G., 136 Evergreen Ave.,	Upper Alton, Ill.	The Pike
Fischer, Wm. A., 5231 Kensington Ave.,	St. Louis.	Wethinkso Lodge
Flint, A. T., 2620 Tennessee Ave.,	St. Louis.	Hustle-Not
Flint, Mrs. A. T., 2620 Tennessee Ave.,	St. Louis.	Tramp Inn
Fox, John (2), Jerseyville, Ill.		Fox Den
French, Mrs. L. J. Brighton, Ill.		French
Grange, State of Illinois.		Grange Hall
Grundman, Dr. F. W., Jefferson Ave. and	Wash St., St. Louis.	Mexico
Hamilton, P. M., Agent, Jerseyville, Ill.		Cross Patch
Haynes, L. C., 526 N. 10th St.,	East St. Louis, Ill.	Igloo
Hickman, J. B., Delhi, Ill.		Imo
Hilliard, G. W., Brighton, Ill.		Hillside
Hockaday, W. A., 1112 College Ave.,	East St. Louis, Ill.	Idle Hours
Johnson, Isaac, St. Louis.		Laffalot
Jones, John, Brighton, Ill.		Jones
Kelsey, J. E., 723 Alby St., Alton, Ill.		Kelsey
Kennedy, Miss Charlotte B., 2924 Eads Ave.,	St. Louis.	The Colonial
King's Daughters, The, St. Louis.		Summer Rest Home
Kupferle, Mrs. Emma G., 5215 Lindell Ave.,	St. Louis.	The Maples
Kupferle, Mrs. Emma G., 5215 Lindell Ave.,	St. Louis.	Dad's Den
Ladies' Civic Improvement League.		House of Public Comfort
Lamb, Mrs. Ann., Jerseyville, Ill.		Lamb's Quarter
Lamb, Mrs. E. J. Jerseyville, Ill.		Lamb's Fold
Lehman, Geo. E., 6339 Clayton Road,	St. Louis.	Bluffside
Leverett, Mrs. Jennie (2) Upper Alton,	Ill.	Leverett
Levis, Nelson, Alton, Ill.		Seldom Inn
Lewis, A. N., 716 Chestnut St.,	St. Louis.	Alle-quip-pa, Lodge
Schultz, W. S., Shipman, Ill.		Summer Home

Cottage Owners—Continued

Name of Owner.	Address	Name of Cottage.
Manning, Lewis W.,	5152 Morgan St., St. Louis.	Rocky Bend
Marsh, Heirs, Jerseyville, Ill.		Hillcrest
McArthur, Mrs. Sarah, St. Louis.		Palmer Rest
McClure, Robert, Jerseyville, Ill.		McClure
Mechin, Gus V. R.,	5088 Raymond Ave., St. Louis.	Ouatoga Lodge
Meriwether, E. G., Alton, Ill.		"Court" Lodge
Meinhardt, Miss Mathilda,	7041 Florissant Ave., St. Louis.	Flora
Meints, A. E.,	1242 St. Louis Ave., East St. Louis.	Castle Inn
Miller, David,	1020 Summit Ave., East St. Louis.	The Frolic
Mott, Mrs. Louisa M.,	2621 S. Compton Ave., St. Louis.	Home, Sweet Home
Noble, Mrs. Emma,	450 Leverett Ave., Upper Alton, Ill.	Kumonin
Kremer, Miss Bertha,	Edwardsville, Ill.	Kremer
Palmer, F. W.,	2808 Eads Ave., St. Louis.	Fernhurst
Pavey, Mrs. C. W.,	Mt. Vernon, Ill.	The Shack
Perrin, Mrs. M. A.,	615 E. 12th St., Alton, Ill.	Shady Dell
Pfeffer, Mrs. Wm. T.,	Morganford Road, St. Louis.	Brookside
Pingree, S. S.,	St. Louis.	Pingree
Priest, Mrs. Lucia I.,	419 Henry St., Alton, Ill.	Club House
Priest, Mrs. Lucia I.,	419 Henry St., Alton, Ill.	Maple Hurst
Rain, Mrs. Isabelle G.,	2601 State St., Alton, Ill.	White Ribbon Rest
Raithel, Geo. E.,	4343 Forest Park Blvd., St. Louis.	Dew Drop Inn
Roades, Nettie B.,	Chautauqua, Ill.	Restawhyle
Roades, Nettie B.,	Chautauqua, Ill.	Bohannon
Roberts, Mrs. Augusta,	St. Louis.	Buckeye Home
Rodgers, A. F.,	Box 59, College and Rogers Ave., Upper Alton, Ill.	The Lodge
Rudolph, J. S.,	4040 Page Ave., St. Louis.	Two Oakes
Scarritt, Rev. J. A.,	319 E. Fourth St., Alton, Ill.	Pioneer Home
Simmons, R. L.,	Brighton, Ill.	Nixon
Sisson, Cyrus A. and Jennie M.,	Jerseyville, Ill.	Mushroom
Slayton, Mrs. John N.,	Grafton, Ill.	Slayton Inn
Smith, Mrs. Hannah B.,	Shipman, Ill.	Linger Longer
Smith, H. V.,	Bunker Hill, Ill.	Sun Set
Smith, Jane C.,	Heirs, Waverly, Ill.	Smith
Spencer, Miss Anna,	Jerseyville, Ill.	"Caro"
Stewart, Byron,	St. Louis.	The Shanty
Steen, Geo. H.,	5138 Kensington Ave., St. Louis.	Elmhurst
Mrs. Rhoades,	Chautauqua, Ill.	Sans Souci
Spreecher, Mrs. D. W.,	538 N. 14th St., East St. Louis.	Edgewood
Talley, H. G., est.,	Piasa, Ill.	G. A. R. Inn
Tunehorst, H. A.,	Jerseyville, Ill.	Tunehorst Rest
Van Treese, Rev. F. M.,	Carmi, Ill.	Van Lodge
Williams, C. T.,	4256 Flad Ave., St. Louis.	Williamsyde
Woods, D. W.,	3536 Victor St., St. Louis.	Riverview
Woods, J. P.,	5215 Lindell Ave., St. Louis.	Outing Inn
Woods, J. P.,	5215 Lindell Ave., St. Louis.	House That Jack Built
Woods, Mrs. J. P.,	5215 Lindell Ave., St. Louis.	Grandview
White, Mrs. J. C.,	Manning St., Upper Alton, Ill.	Whitehall
Woman's Christian Home,	St. Louis.	Summer Rest
Woman's Christian Temperance Union.		W. C. T. U.
Woman's Relief Corps.		W. R. C.
Wyckoff, Mrs. D. A.,	150 Manning St., Upper Alton, Ill.	Wyckoff
Yerkes, Dr. T. T.,	Upper Alton (Mrs. Pauline Collins in charge).	Sleepy Hollow
Yerkes, Dr. T. T.,	Upper Alton (Mrs. Pauline Collins in charge).	Twin Cottage

HOTEL AND BOARDING HOUSE RATES AT NEW PIASA CHAUTAUQUA

Hotels and Boarding Houses are making reasonable rates for season of 1913. The service rendered is commensurate with the price charged, being equal to and in most cases superior to that supplied at most resorts where the rates are higher and the service oftentimes more or less indifferent. We list below a few only, with whom the expectant visitor may correspond in advance with reference to making reservation. Several whose names do not appear among this list, because of failure to respond in time to the committee's inquiry, are fixed to accommodate guests by the day, week, or month—with or without Board. A complete register is kept on file in the manager's office on the grounds, where strangers may apply for additional information.

"THE INN"

90 Rooms

Mrs. H. C. Dudley, Manager

American Plan—Without Bath

1 in room.....\$12.50 weekly; \$2.50 daily
2 in room, each. 10.00 weekly; 2.00 daily
3 or more, each. 9.00 weekly; 1.50 daily

With Bath

1 in room.....\$15.00 weekly; \$3.00 daily
2 in room, each. 12.50 weekly; 2.50 daily
3 or more, each. 10.00 weekly; 2.00 daily

Rooms, without meals, \$1.00 daily, each
Meals, 50c each

Special orders for meals, for parties,
\$1.00 per plate

Special rates to House Parties

THE KING'S DAUGHTERS' SUMMER HOME

A ten-room cottage, where wage-earning women can get board at a nominal sum. Nonsectarian. Open July 1st to September 15th.

All wage-earning young women eligible. For further information write to Mrs. Pauline Collins, 1104 Henry Street, Alton, Ill., before July 1st, or Mrs. A. T. Flint, 2620 Tennessee Avenue, St. Louis, Mo.

THE W. C. T. U. COTTAGE

12 Rooms

Rates Per Week, \$4.00, \$5.00 and \$6.00,
according to location of rooms
Special Rates for the Season

Lodging 25 Cents

Good Bath Room and Other Conveniences

"SUMMER REST"

Conducted by

Womans' Christian Home Association
of St. Louis

For Working Women Only

Board—\$3.00 Per Week

PIASA SPRINGS HOTEL

40 Rooms

Under Management of L. C. I. A.

Rooms Only

Per day\$ 1.00
Per week (2nd floor)..... 5.00
Per month (2nd floor)..... 18.00
Per week (3rd floor)..... 4.00
Per month (3rd floor)..... 14.00

Lodging—\$0.50

Two in room (2nd floor).....\$8.00 weekly
Three in room (3rd floor).... 6.00 weekly
Two in room (2nd floor)....\$30.00 monthly
Three in room (3rd floor).. 20.00 monthly

"BELLVIEW"

Conducted by Mr. and Mrs. W. J. Bell
Per week, room and board.....\$7.00
Per day, room and board..... 1.00
Room only, two in room, weekly.... 5.00

Have also Cottage for Rent by Week or
for Season

Correspondence Solicited

"W. R. C. COTTAGE"

Conducted by Mrs. M. A. Brown

Per week, room and board.....\$7.00
Per day, room and board..... 1.00

Correspondence Solicited

"KENTUCKY HOME"

Conducted by Mrs. Edmond Barnes

Rates are not at hand at time of going
to press, same, however, are in line
with those charged by others.

Address Mrs. Edmond Barnes,
"Kentucky Home," Chautauqua.

"THE PIASA BIRD"

Conducted by Geo. W. McCreary

Who will serve during season

A Delicatessen Breakfast

An A La Carte Lunch

and

Dinner from 5 o'clock to 8 o'clock

Only Crystal Water Co.'s products used

RAILROAD TIME TABLE

At the time this book goes to press, neither the "C. P. & St. L. R. R.," the "E. St. Louis & Suburban Ry. Co. (Alton Branch)" or the "Boat Lines" have their summer season time table printed. As our Year Book is in circulation prior to June 1st, on which date the summer season schedule is put into effect, we are obliged to omit all time tables. Chautauqua visitors will obtain full information at their ticket office. Time table, giving special rates, will be in effect June 1st. Ask your ticket agent.